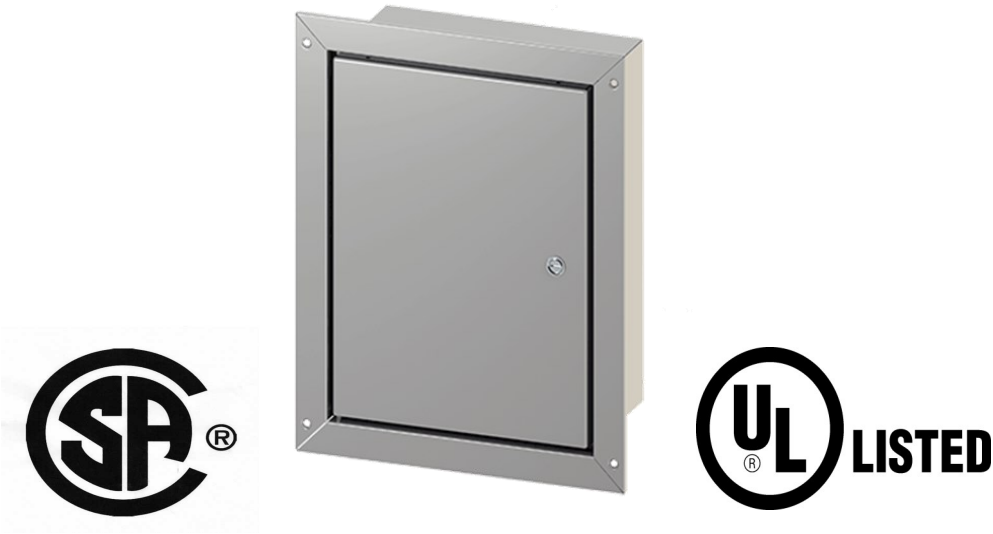


# Flush Mounting Enclosure



## Specifications

- > 16 gauge steel
- > Seams continuously welded and ground smooth
- > Corner-formed doors
- > Simple easy-to-remove and install hinge pins with built-in captivation clip
- > High-torque threadless studs and fasteners on door
- > Minimum-width body flange provides maximum door opening (210 degrees)
- > Door opens 210 degrees
- > External formed body flange
- > Finish RAL 7035 textured light gray polyester powder paint inside and out
- > Panel mounting studs fit optional panels and other accessories
- > Mounting holes in back of body for optional external wall-mount brackets
- > Removable door with hidden hinges for clean, aesthetic appearance
- > Quarter-turn slotted latch(es)
- > Grounding stud on body; bonding provision on door
- > Hardware kit with panel mounting nuts, panel grounding hardware and sealing washers - Installation instructions provided
- > Flush-Mount models have a mounting frame that extends completely around the enclosure

## Dimensions

- > Height – 16 inches
- > Width – 12 inches
- > Depth – 6 inches

## Standards

- > UL 508 Type 3R, 4, and 12
- > CSA Type 3R, 4, and 12
- > Complies with NEMA Type 3R, 4, and 12

## Finish

- > RAL 7035 textured light gray polyester powder paint inside and out



[info@canadiangassafety.com](mailto:info@canadiangassafety.com)

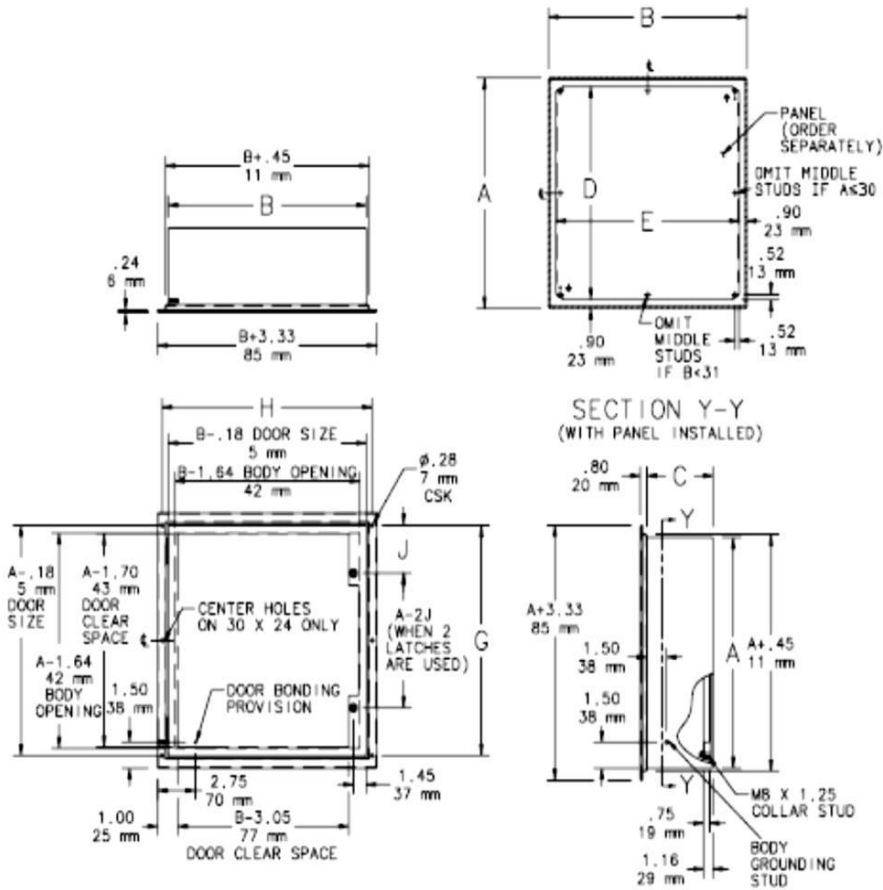


[www.canadiangassafety.com](http://www.canadiangassafety.com)



647-577-1500

# Flush Mounting Enclosure



AxBxC in./mm	Finish	Door Ga.	Body Ga.	CONCEPT Panel	CONCEPT Panel	D x E in./mm	G x H in./mm	Latches qty.	Latches style	J in./mm
16.00 x 12.00 x 6.00 406 x 305 x 152	RAL 7035 Lt. Gray	16	16	CP1612	CP1612G	14.20 x 10.20 361 x 259	16.75 x 14.25 425 x 362	1	Quarter-turn	8.00 203

UL 508A Listed; Type 4, 12; File No. E61997  
 cUL Listed per CSA C22.2 No. 94; Type 4, 12; File No. E61997

NEMA/EEMAC Type 4, 12, 13  
 CSA, File No. 42186: Type 4, 12  
 VDE IP66  
 IEC 60529, IP66



info@canadiangassafety.com



www.canadiangassafety.com



647-577-1500