



# Mini Merlin CSD-1 Solution

## Manual Shutdown Relay with Added Gas Detection

Partcode: CGSCH4CO (Methane) CGSLPGCO (LPG)

**Protect Life & Building**



### Automatic Emergency Gas Shutdown

Automatic gas supply shutdown in alarm i.e. gas detected, emergency panic & fire alarm activation



### Manual Reset

Touch button for manual reset after an alarm state or upon start-up



### Plug & Play

Pre-programmed inputs & outputs for fast and easy installation



### Meets Code Requirements

Manual gas shut off to boiler rooms



### Manual Emergency Gas Shutdown

Use with a twist release panic button to manually shut off the gas supply in emergency.



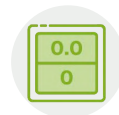
### BMS & Fire Panel Connectivity

Outputs available to BMS systems via the controllers dry contacts



### UL Listed

UL 61010 Listed Controller  
UL 2075 sensor



### Easy To Use

Clear TFT screen displays status indications & live gas detector values

## Gas Detection

### Two Stage Built-In Alarm With Automatic Shutdown

Gas Sensor	Alarm 1 - Pre Alarm Warning	Alarm 2 - Full Alarm	Life (Years)
Carbon Monoxide (CO)	> 20ppm	> 20ppm @ 2 hours / 50ppm @ 1 hour / 100ppm @ 10 minutes / 300ppm @ 1 minute	5
Methane / LPG	> 8% LEL	> 10% LEL	10

## CSD-1 Code

'(b) A manually operated remote shutdown switch or circuit breaker shall be located just outside the boiler room door and marked for easy identification.

(1) Consideration should be given to the type and locations of remote shutdown switch to safeguard against tampering. If the boiler room door is on the building exterior, the switch should be located just inside the door. If there is more than one door to the boiler room, there should be a remote shutdown switch located at each door.

(2) Activation of the remote switch or circuit breaker shall immediately shut off the fuel or energy supply.'



**THE SMART  
CGS SOLUTION**

# WISER AND SAFER CONDITION



Emergency Shutoff Buttons



Fire Alarm



Close a solenoid valve in alarm

## INPUTS

Inputs from various devices will initiate an alarm condition, which will shut down connected devices

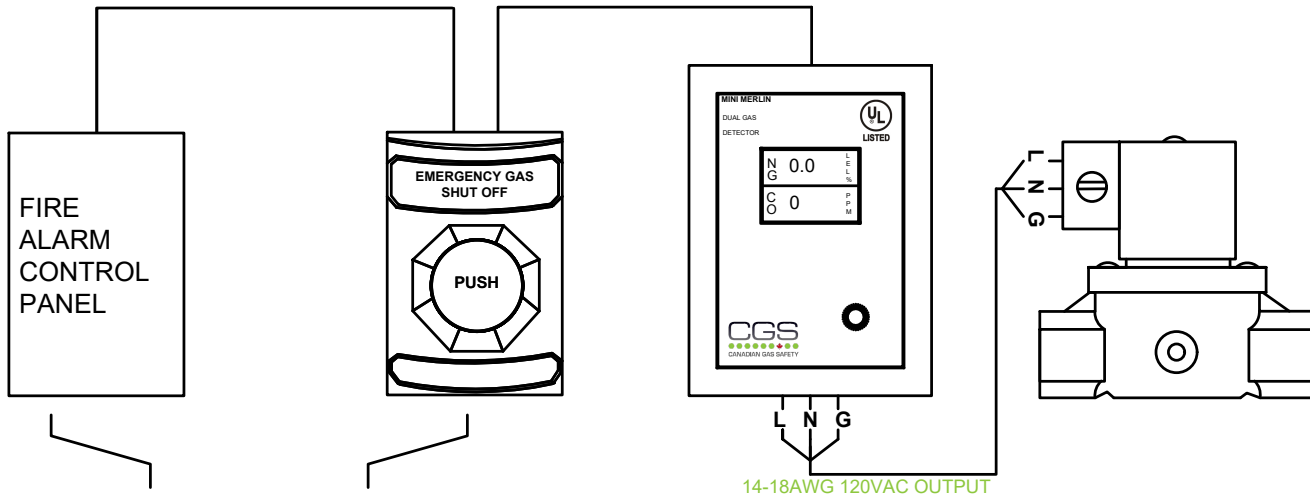
## THE MINI MERLIN

Add in the Mini Merlin as a relay panel between your emergency shut off and fire alarm, and get the added benefits of combustible gas detection and simply the wiring.

## OUTPUTS

Various built-in outputs allow the Mini Merlin to shut down devices

### NORMALLY CLOSED DRY CONTACT INPUT



### Fire Alarm

If the fire alarm is activated, the Mini Merlin will close the gas solenoid valve

### Panic Button

If the emergency panic button activated, the Mini Merlin will close the gas solenoid valve

### Gas Detection

When gases reach dangerous levels, it will automatically close the valve

### Gas Solenoid Valve

120VAC normally closed gas solenoid valve for safety shut off

Find out more

**Canadian Gas Safety Inc**

[www.canadiangassafety.com](http://www.canadiangassafety.com)

Head office: 150 King Street West, Suite 200, Toronto, ON M5H 1J9

Tel: (647) 577-1500

Email: [info@canadiangassafety.com](mailto:info@canadiangassafety.com)



# SIMPLE, EFFICIENT & RELIABLE